

ABA's Breastfeeding Helpline Services in 2022

Supporting mums, babies and families

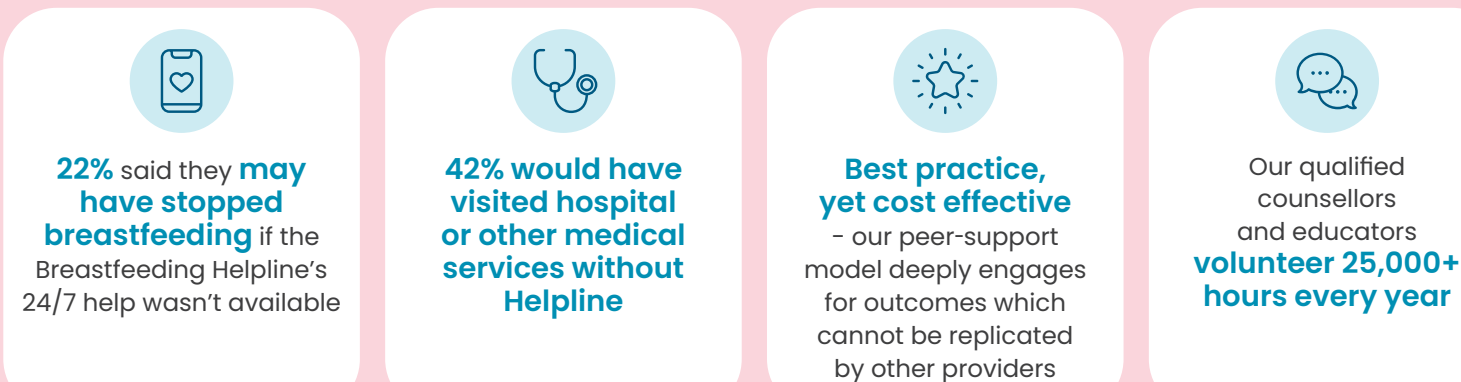
Immediate, essential and equitable support



Supporting women's wellbeing*



Significantly reducing the health system burden*



*2022 survey respondents reflecting on their Helpline services interaction

Support for your journey, however and whenever you need it

Breastfeeding Helpline 1800 686 268 LiveChat breastfeeding.asn.au